



DRH

Components

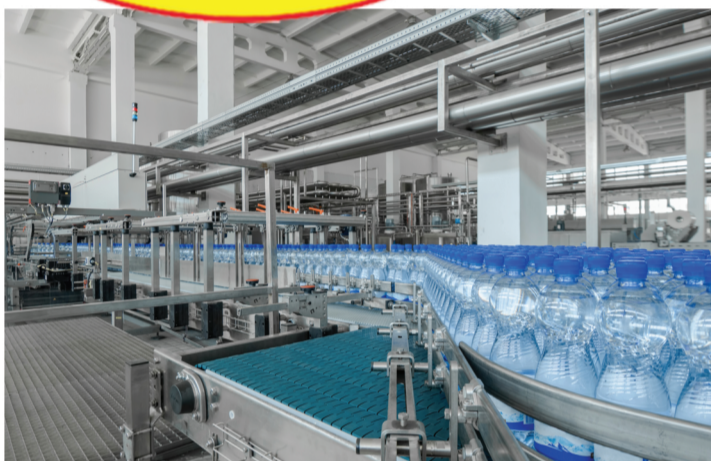
P O Box 1203, Hillcrest, 3650
Unit 2, 22 Assagay Road, Hillcrest, 3610

Tel: 031 765 4748

Fax: 031 765 4651

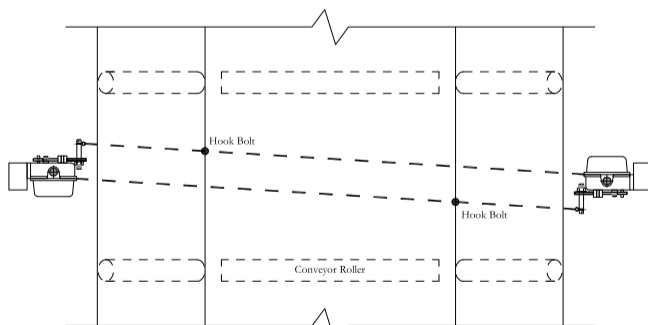
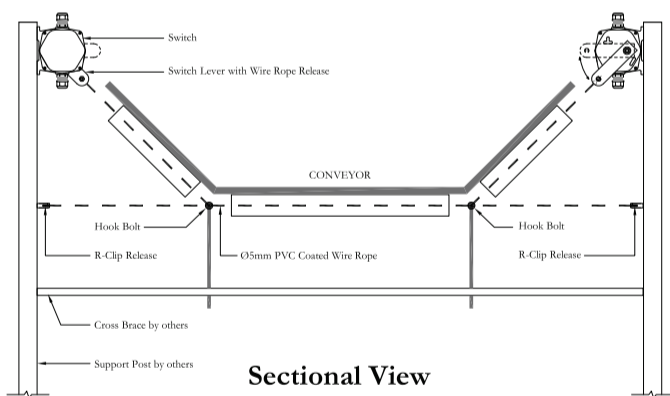
Info@drhcomponents.co.za

www.drhcomponents.co.za



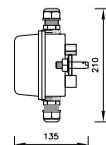
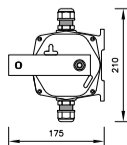
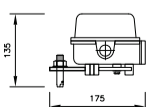
SRR-100-T CONVEYOR RIP SAFETY SWITCH

The SRR-100-T is a steel wire rope operated switch that detects a rip, tear or protrusion through the conveyor belt. The SRR-100-T provides a means of automatic shutdown and alarm, to limit the damage to the conveyor belt. The SRR-100-T is installed as near to the loading end of the conveyor. This is where damage to the conveyor belt is most likely to occur.



SPECIFICATIONS

- Part Number - SRR-100+T
- Contact Rating - 15A 115/220VAC, 0.5A 125VDC
- Micro Switches - 2SPDT
- Ambient Temp -20° to 60°C
- Reset - Manual
- Ingress Protection - IP67
- Enclosure - Die-Cast
- Weight - 3kg



ACCESSORIES

- R-Clip
- Ø5mm PVC Coated Wire Rope
- Hook Bolts
- R-Clip Release
- Clamp
- Thimble